



FEATURES:

- AC Input 90~305Vac
- Power Factor: >0.98@115Vac / >0.95@230Vac
- Protection: SCP / OVP / OTP
- High Operating Ambient Temp.: -25°C~+50°C
- 0-10V dimming control
- Safety: Meet UL8750
- EMI: Meet FCC Part15
- Comply with Indoor
- Warranty: 3 years (refer to warranty policy)
- RoHS Compliant

PRODUCT SPECIFICATION						
MODEL	DC OUTPUT POWER	DC OUTPUT VOLTAGE(V)	OUTPUT CURRENT(A)	OUTPUT CURRENT TOLERANCE	EFFICIENCY	O/P NOISE(P-P,V)
MB4N-045U420	46.2W	28-42	275*4	±10%	85%	4

ELECTRICAL SPECIFICATION	
INPUT VOLTAGE RANGE	90-305Vac, Normal: 100-277Vac
INPUT FREQUENCY	Range: 47-63Hz, Normal: 50-60Hz
ACTIVE POWER FACTOR	>0.98@115Vac / >0.95@230Vac
THD	NA
TURN ON DELAY TIME	2000ms at Full Load 115Vac/230Vac
AC CURRENT	0.8A / 100Vac 0.25A/277Vac
INRUSH CURRENT (typ)	Cold Start 45A@120Vac
LEAKAGE CURRENT	NA
SHORT CIRCUIT PROTECTION	SCP, OVP and OTP will restart automatically after the fault condition is removed
OVER VOLTAGE PROTECTION	
OVER TEMP. PROTECTION	
OVER CURRENT PROTECTION	NA
OPERATING TEMP.	-25°C~+50°C @Full Load
STORAGE TEMP.	-40°C~+80°C
RELATIVE HUMIDITY	10% to +90%, non-cond.
SAFETY	Meet UL 8750
EMI	Meet FCC Part15
WITHSTAND VOLTAGE	NA
ISOLATION RESISTANCE	NA
DIMENSION (L*W*H)	192.5 * 57.15 * 34.1 mm 【7.58 * 2.25 * 1.34 inch】

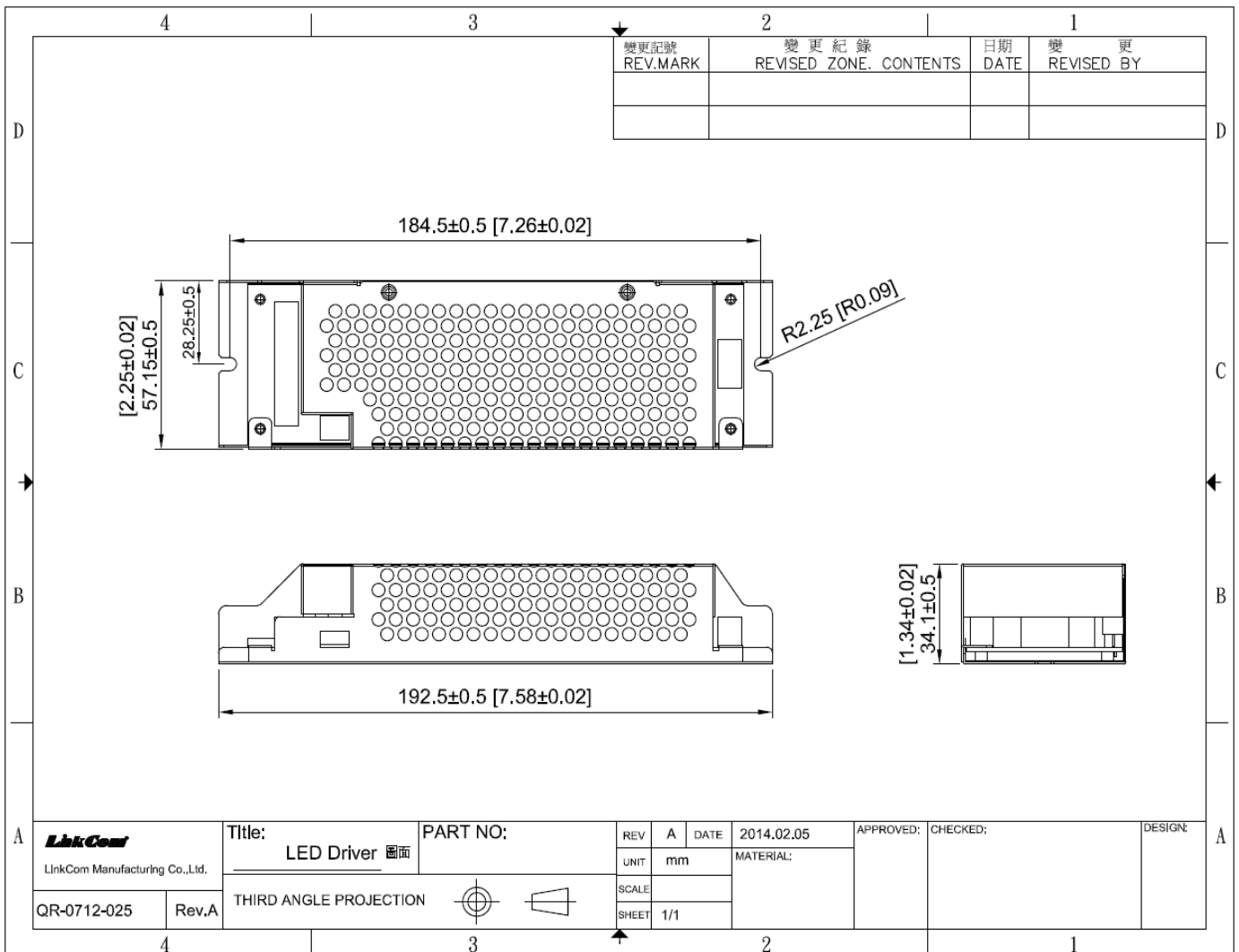
- (1) All parameters not specially mentioned are measured 230VAC input.
- (2) All specifications Typical @25°C, unless otherwise noted, at normal line and load.
- (3) Ripple and Noise measured directly at pins/terminals at nom. load, @20MHz bandwidth.
- (4) Specified for free-air convection cooling.
- (5) Minimum load is NOT required for proper operation .
- (6) 100% Production Tested.

* REFERENCE: www.linkcom.com.tw

* Please contact sales@linkcom.com.tw, sales@linkcomusa.com for more information

DERATING CURVE

DIMENSIONS



* REFERENCE: www.linkcom.com.tw